

## ExamView®

The ExamView® Assessment Suite is a software program that uses data stored in banks to create a variety of assessments. It is comprised of the Test Generator, Test Manager, and Test Player.

The Test Generator allows teachers to create assessments using various types of questions including Multiple Choice, Short Answer, Bimodal, True/False, and Numeric Response. Teachers can use the existing *Big Ideas Math* content or create their own questions.

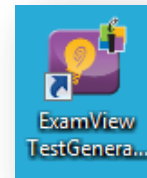
The Test Manager allows teachers to manage rosters and automatically collect performance data to analyze results and identify areas of concern. Assignments are automatically graded and teachers are provided with comprehensive reports.

The Test Player allows students to take tests and quizzes over their school's local network.

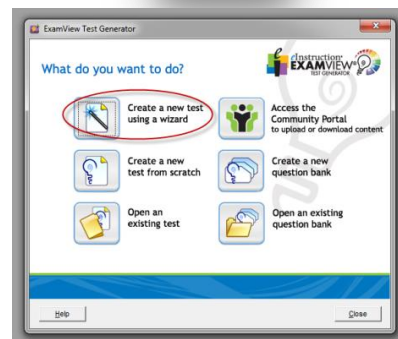
There are multiple ways to create an ExamView test. Below is one example of how to locate the *Big Ideas Math* banks within the ExamView Test Generator.

### Instructions for opening *Big Ideas Math* test banks in ExamView®

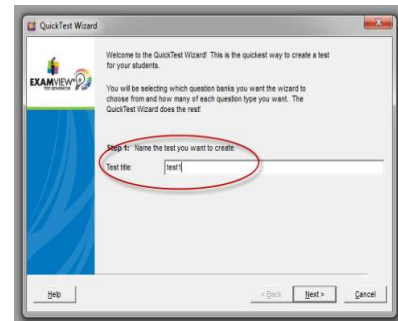
1. Open the ExamView® Test Generator.



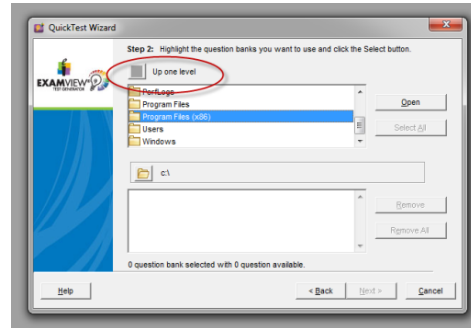
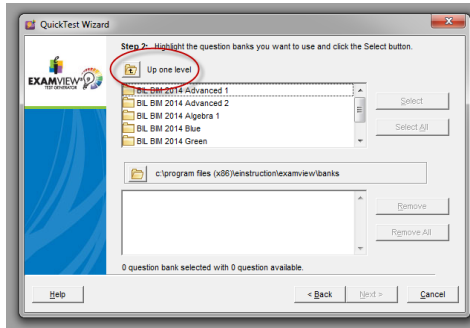
2. Click on *Create a new test using a wizard*.



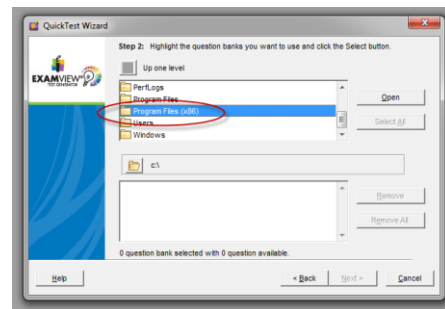
3. Name your test and click *Next*.



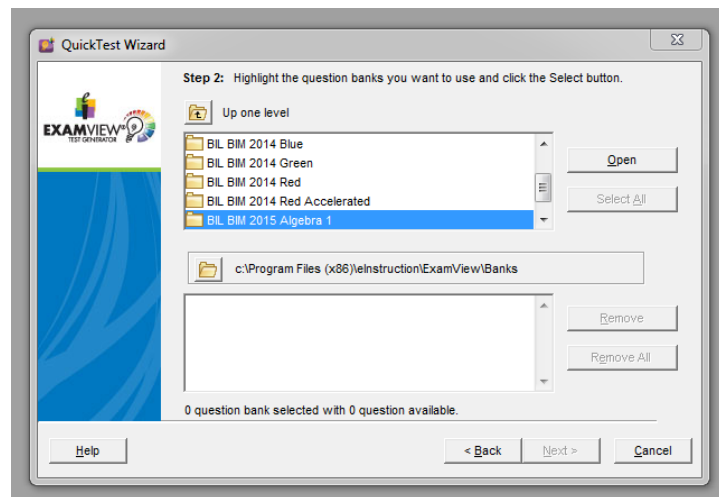
4. Choose *Up one level* until the box turns gray.



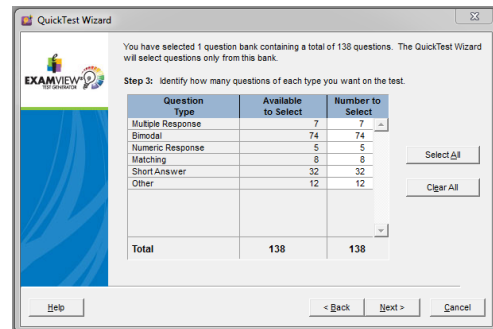
5. Open the folders in order.  
 PC: Program Files (x86), eInstruction, ExamView, Banks  
 Mac: Applications, eInstruction, ExamView, Banks



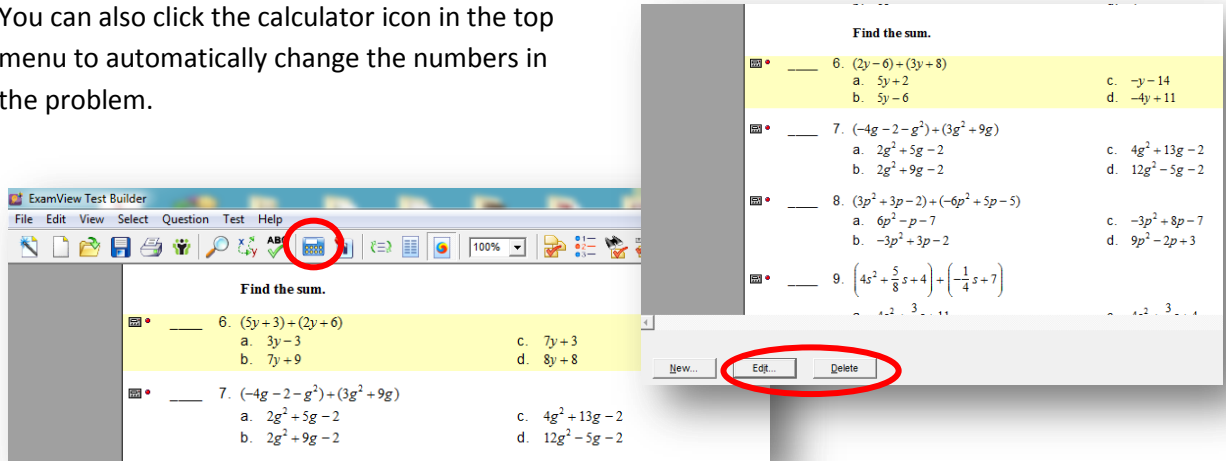
You now should see the **BIL BIM 2014/2015** folders displayed and can choose from one of them to create an assignment.



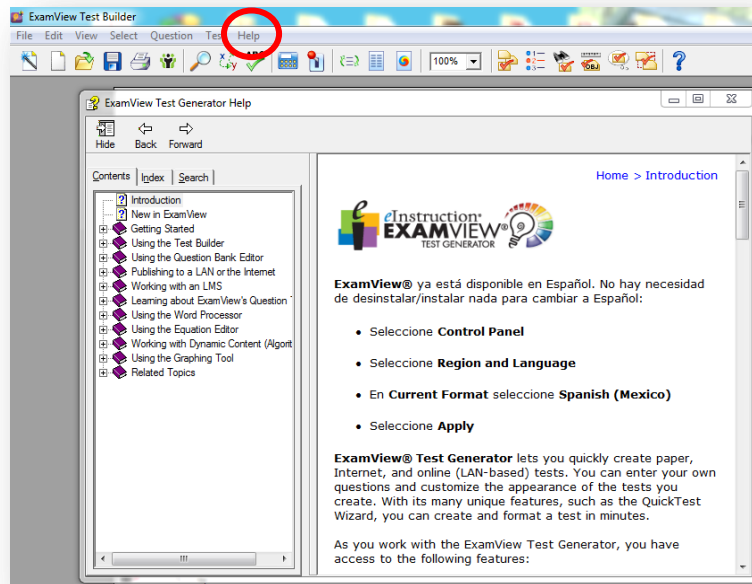
6. After you choose a chapter, click *Next*. You will be prompted to select the type of questions you wish to see on the test. Click *Next* again.



- After you select the problem types, review the test summary, and click *Finish* to build your test.
- You can click on a problem to delete or edit it. You can also click the calculator icon in the top menu to automatically change the numbers in the problem.



For more information on how to use the ExamView® Assessment Suite, click *Help* from the menu and click *Help Topics*.



Video tutorials can be found by searching YouTube for *ExamView* or by going to <https://www.youtube.com/watch?v=2C2MVsnJX2o&list=PLA66C1183FCD805CF>.